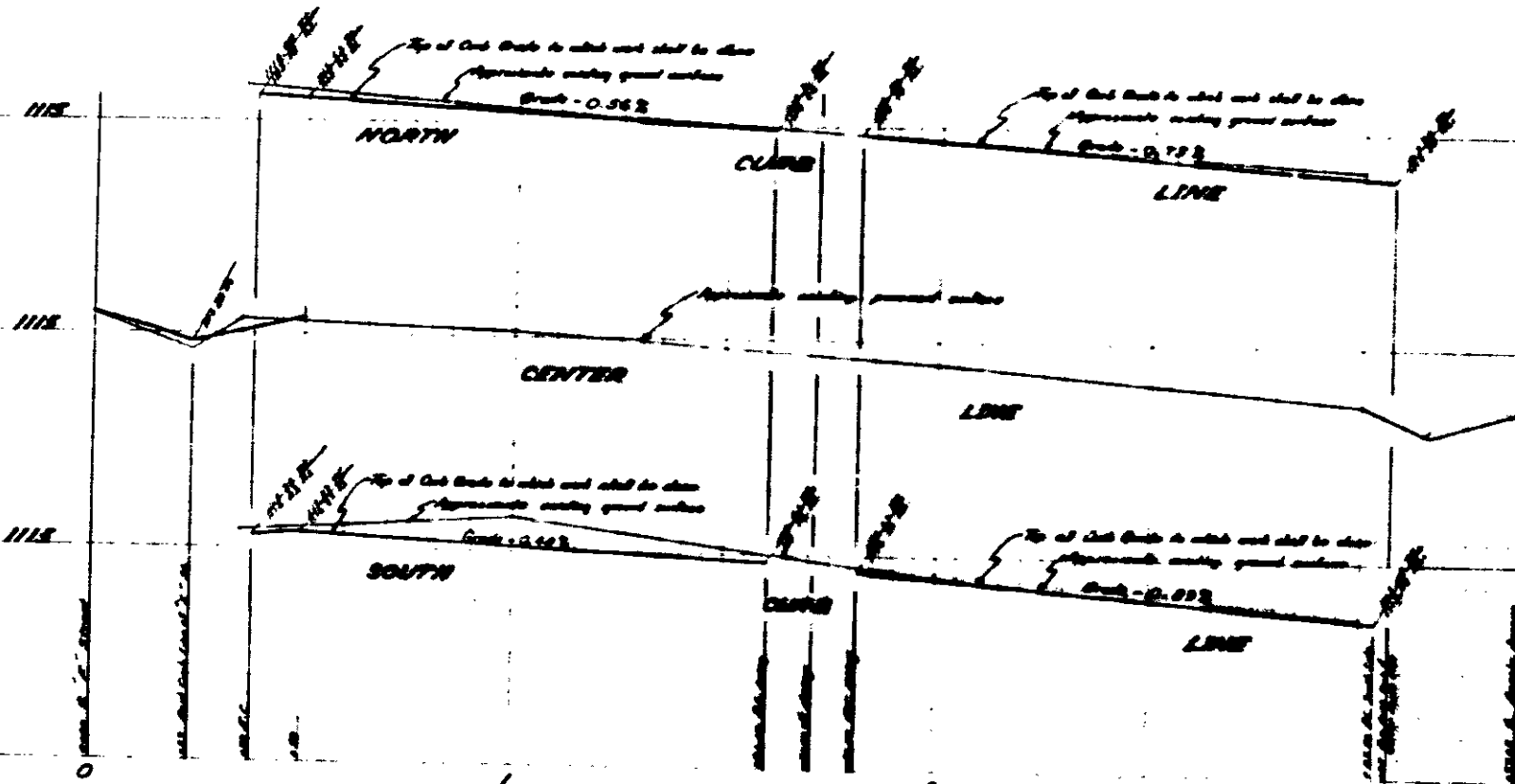


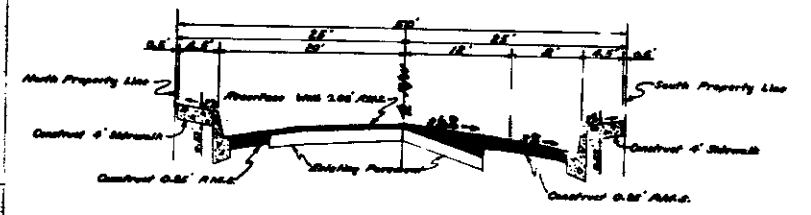
PROFILE



GENERAL NOTES

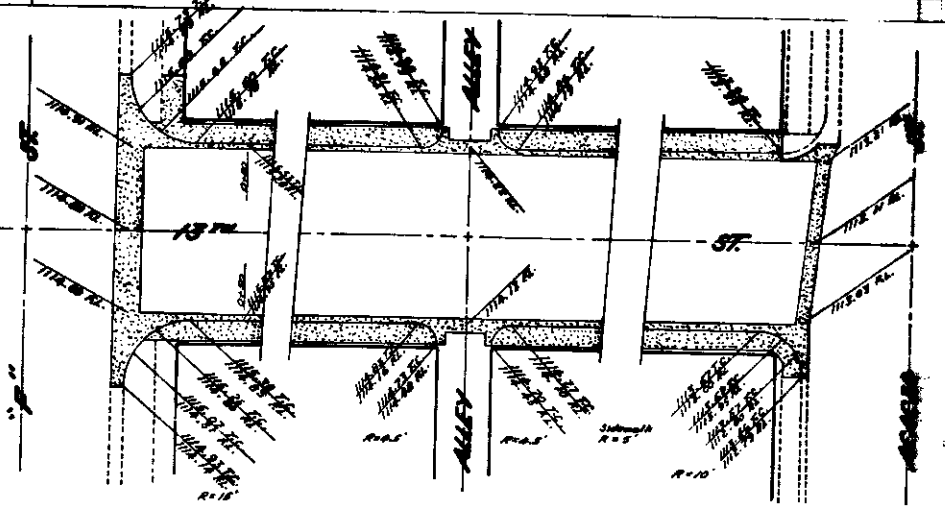
- All work embraced by this plan shall be done in conformity with applicable provisions of Specifications No. 2271.
- Recess Curb for Driveways where necessary. Exact locations and widths to be determined in the field. Widths not to exceed 16 feet.
- All Standard sections of Curb & Gutter are as per City of San Bernardino Department of Engineering Standard Drawing No. 2257.
- Payment for all removals, dirtwork, and utility shall be included in prices bid for other contract items of work and no additional compensation will be allowed therefor.
- Removal of Obstructions (including curbs) as directed by Engineer.
 - 1. To be removed & replaced under this contract. (Footings on Street signs shall be Class B concrete same as original installation.)
 - 2. To be removed or relocated by others.
 - 3. To be removed under this contract.
 - 4. To be removed and deposited on adjacent property.

TYPICAL SECTION

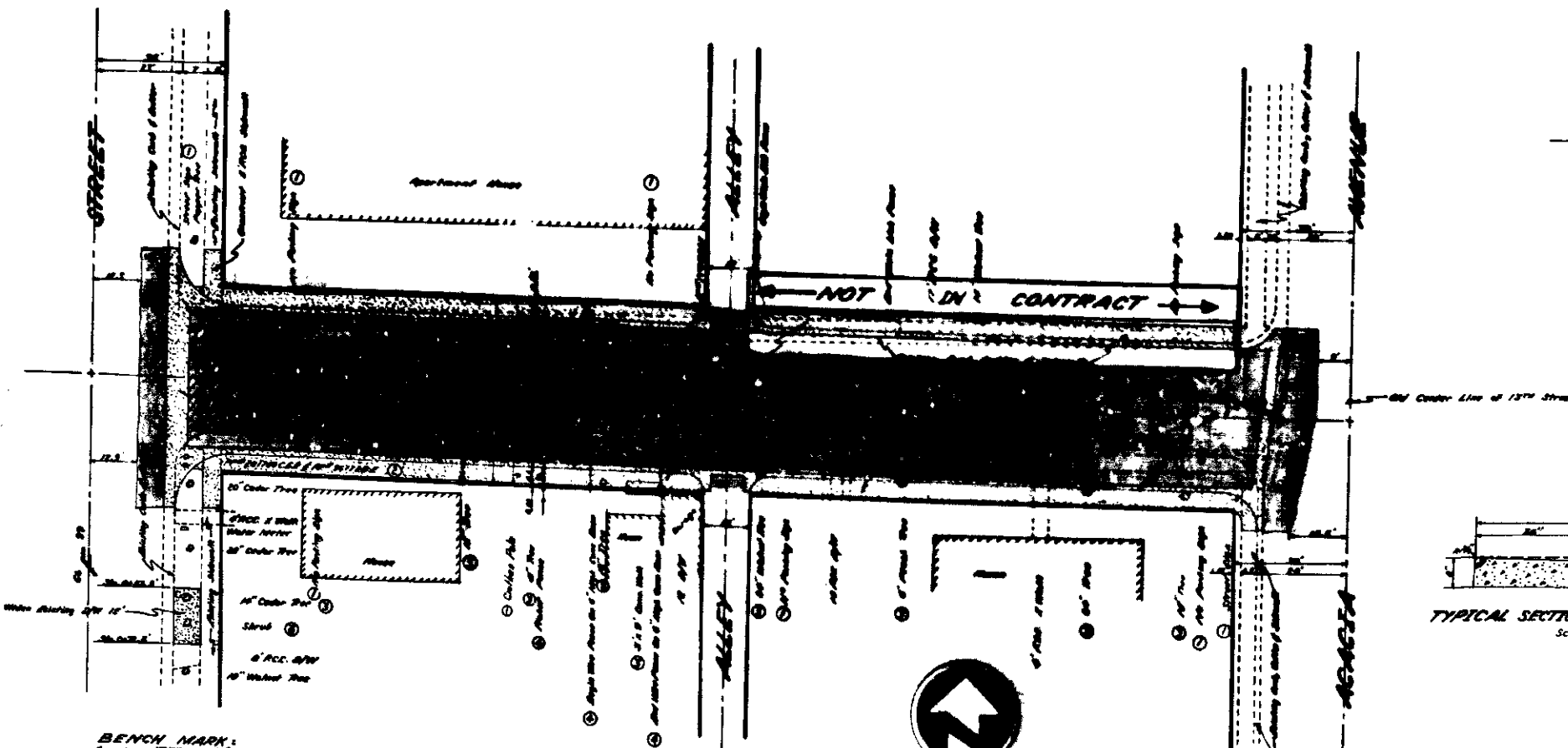


Scale: 1" = 4'

INTERSECTION DETAIL



Scale: 1" = 20'



BENCH MARK:
6 pin 13" S.I. & F. S.I.
Elev. 115.46 M.S.L.

TYPICAL SECTION 6" P.C.C. X-GUTTER
Scale: 1" = 4'